

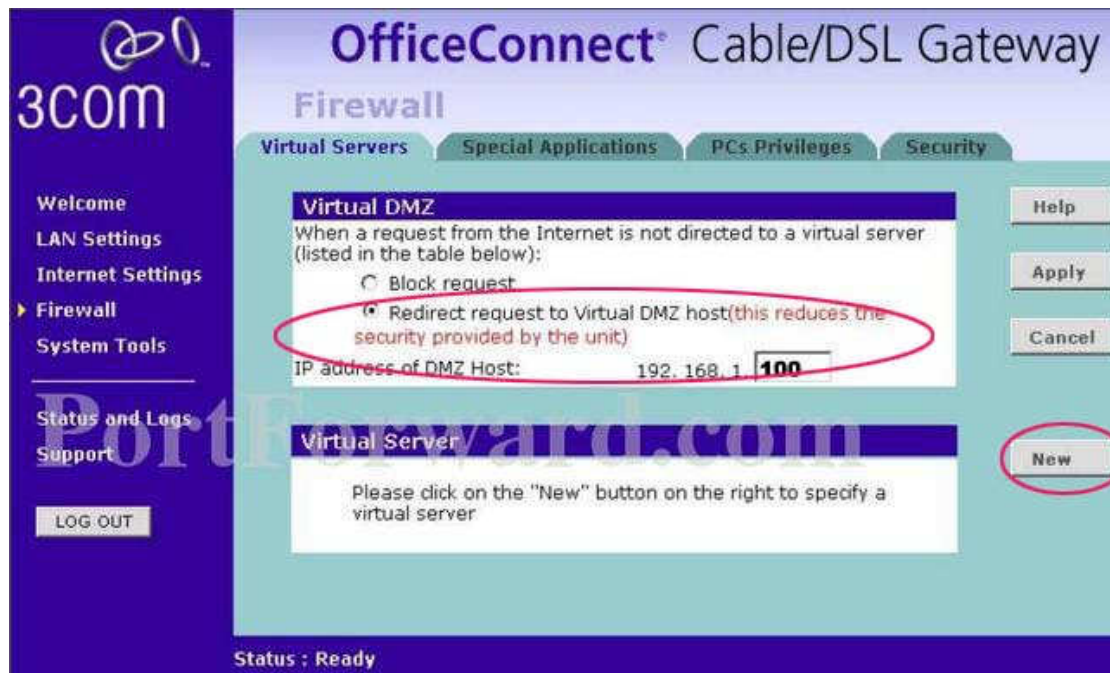
How to use CAT through Internet

To use CAT through Internet, you need open up some ports in your router and firewall.

Router(We use 3COM OfficeConnect 3crwe52196 as example):

There are two ways to redirect request to CAT.

1. Setup DMZ host



2. Set Port forwarding:

Click the **New** button

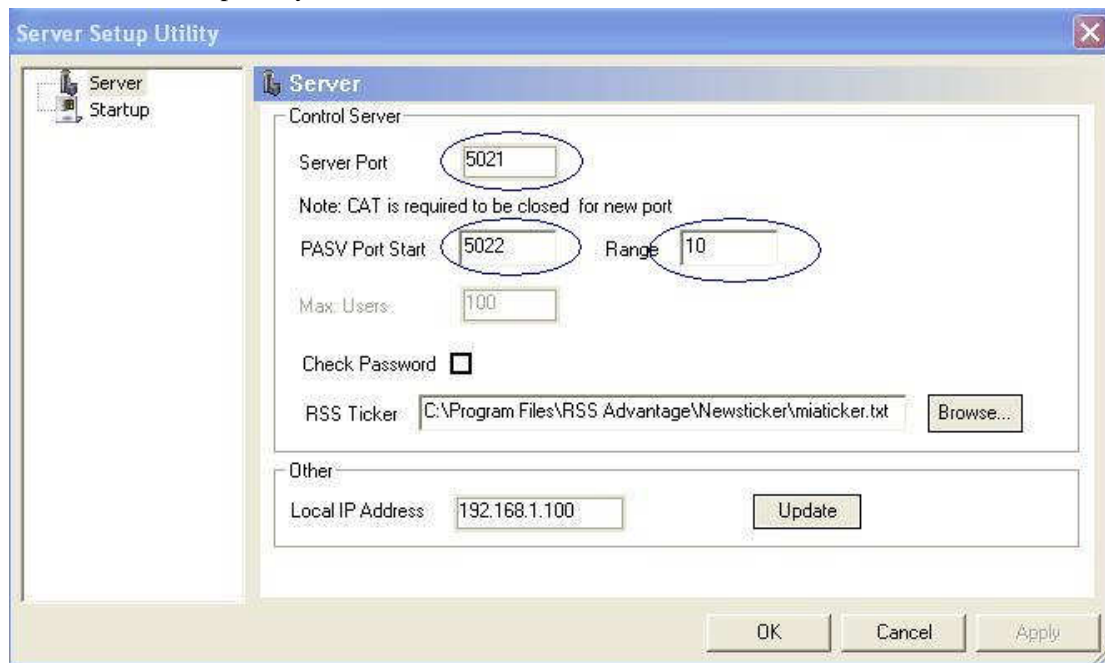
Select **Custom** from the **Local Service** drop down box



CAT requires you to forward the 5021-5032 ports to the “Server IP address” 192.168.1.X.
TCP&UDP 5021* for Commands
TCP 5022-5032* for file/Instant message(10 ports by default, you need open more if there're more players)

CAT:

Tools->Server setup utility...



Sever Port: for Commands between CAT and Player

PASV Port Start: The Start port for transferring files/messages

Range: How many port will be open for transferring files/messages

Player:

Set Server IP to CAT's external IP address(Router's IP) /hostname and port(default is 5021)

*Default port is 5021, user can change it.